

Medical Gases

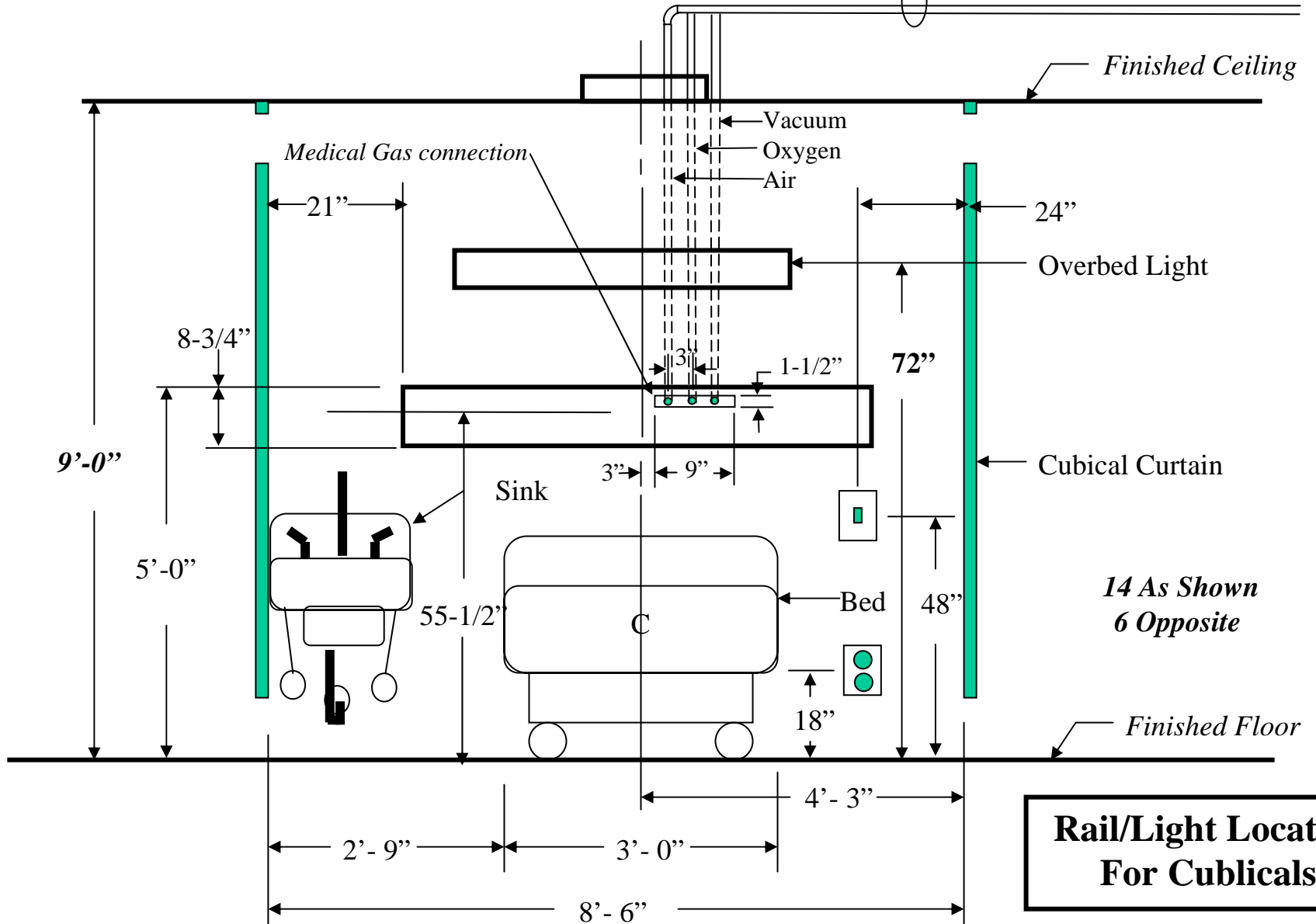
$\frac{1}{2}$ " Oxygen $\frac{1}{2}$ " Air $\frac{3}{4}$ " Vacuum Copper (type L) Pipe

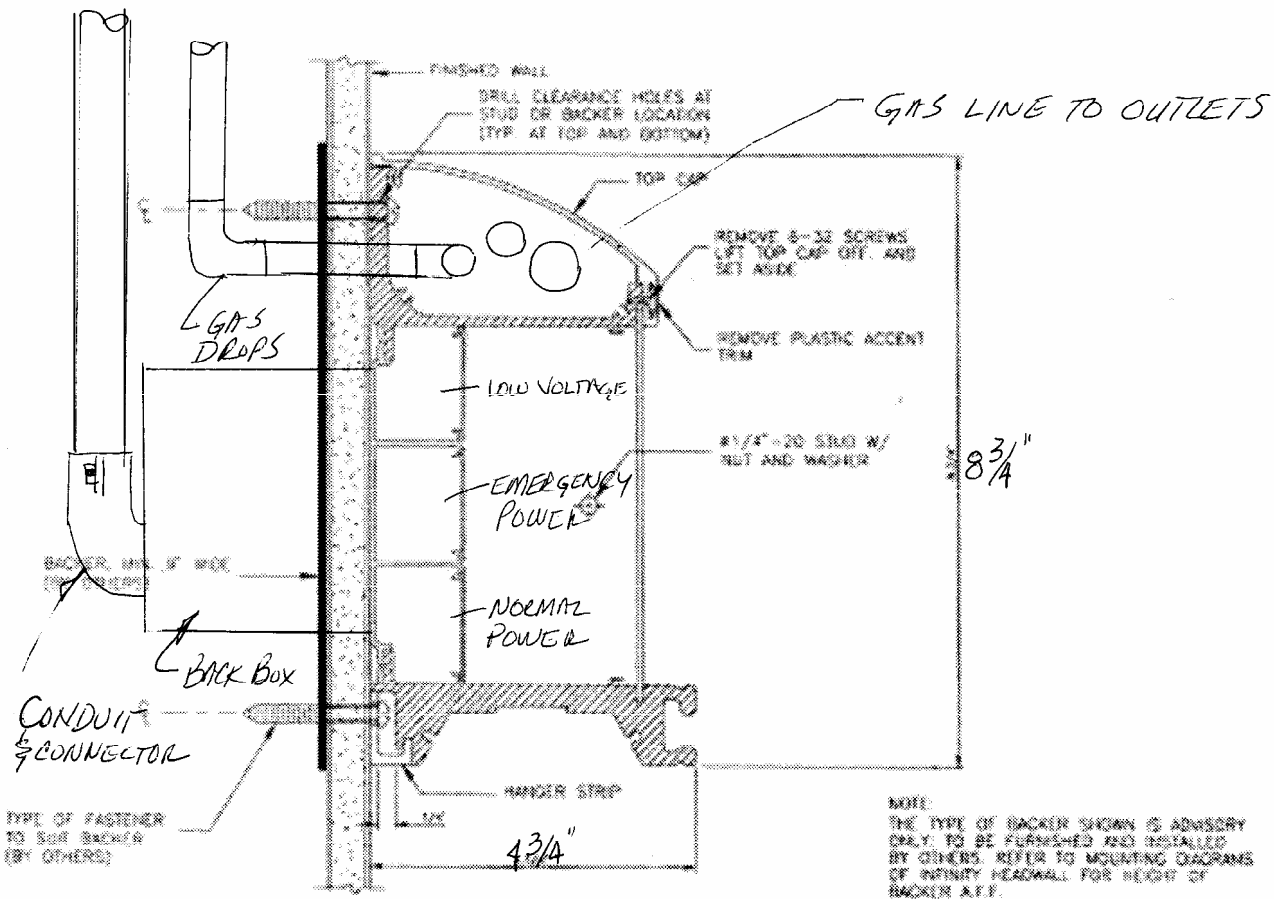
Wednesday, March 02, 2005

Medical Gases

Medical gas lines
 1/2" Air, 1/2" Oxygen
 and 3/4" Vacuum

By Installing Contractor



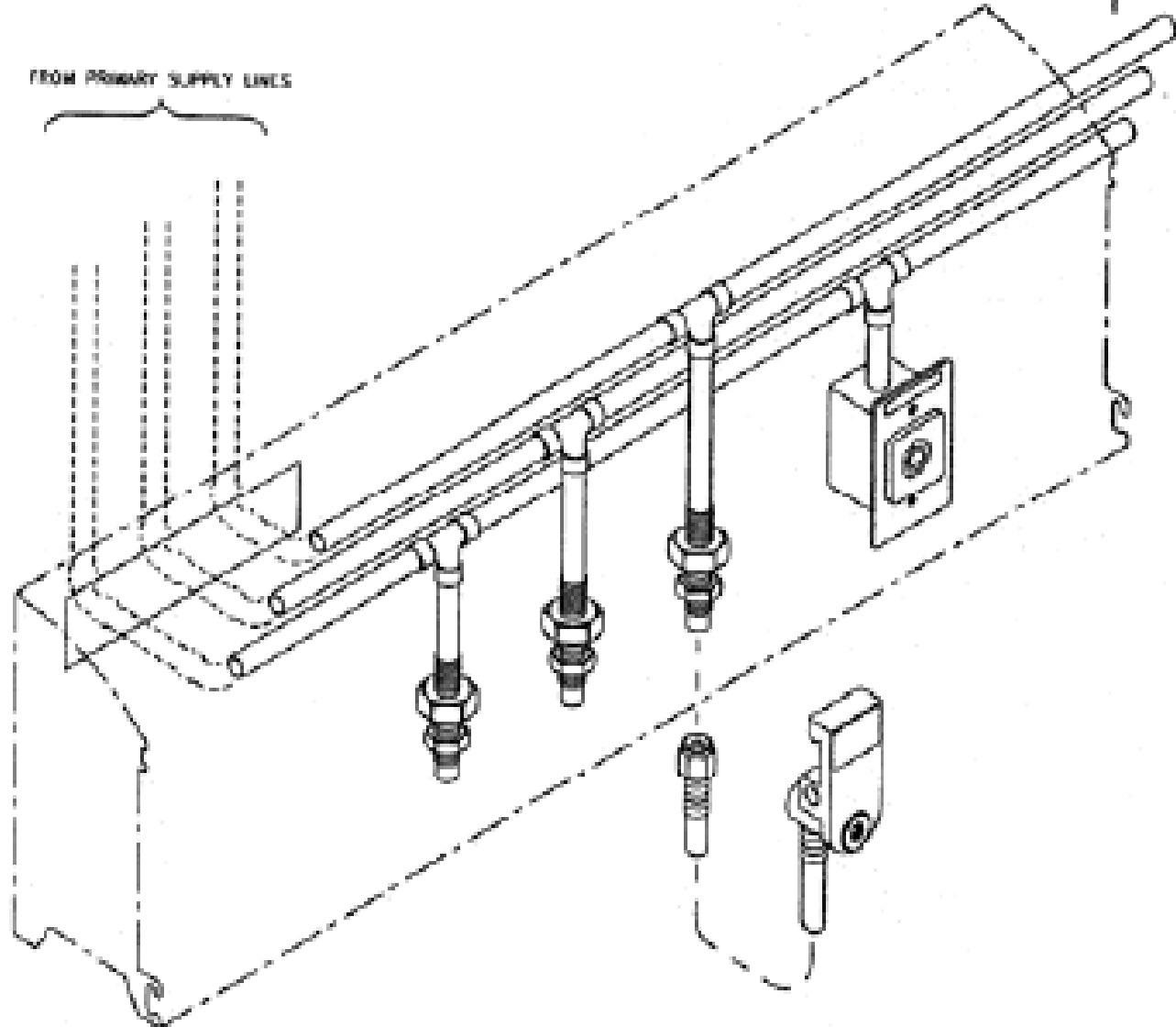


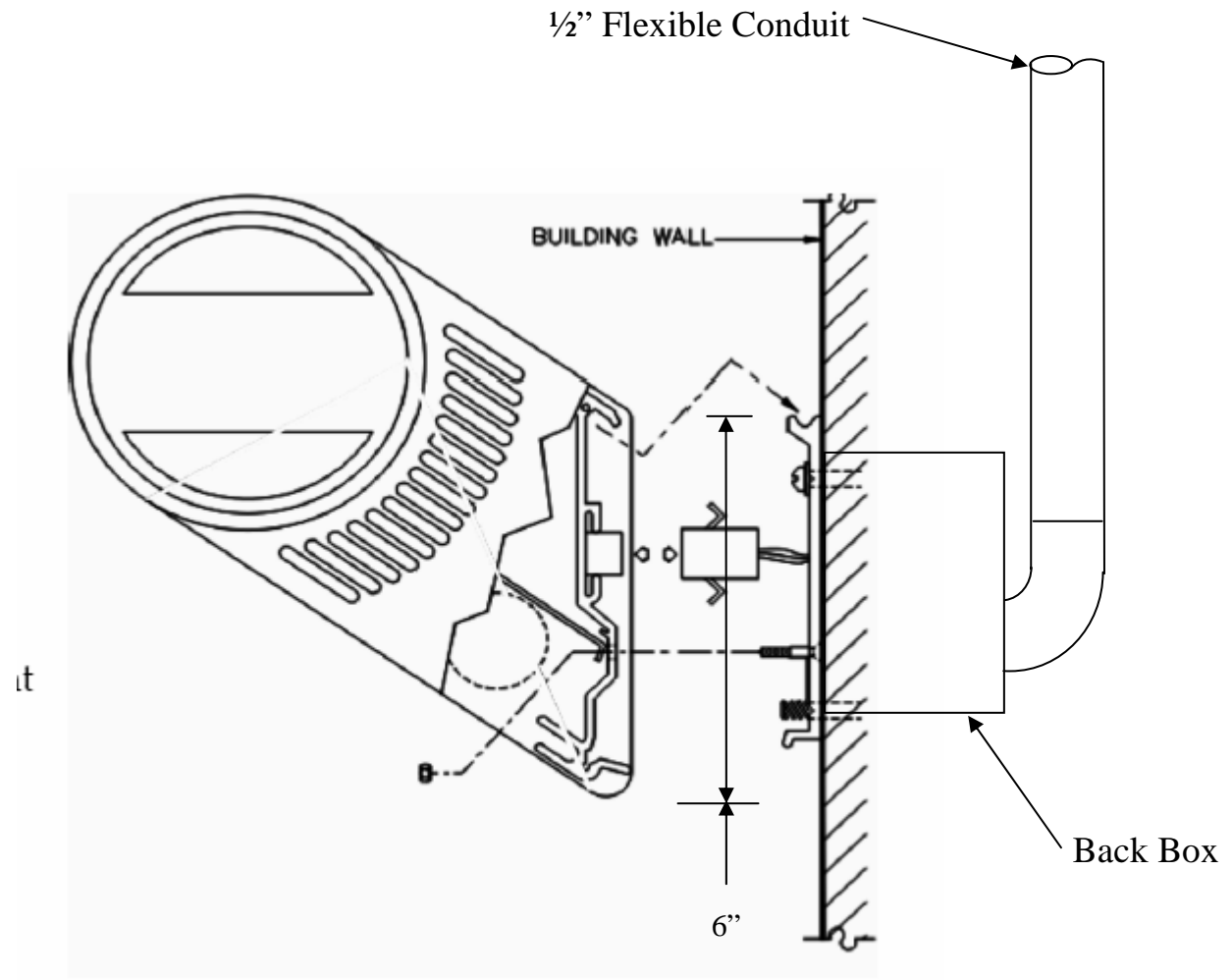
Rail Section

Medical Gases

1/2" Oxygen 1/2" Air 3/4" Vacuum Copper (type L) Pipe

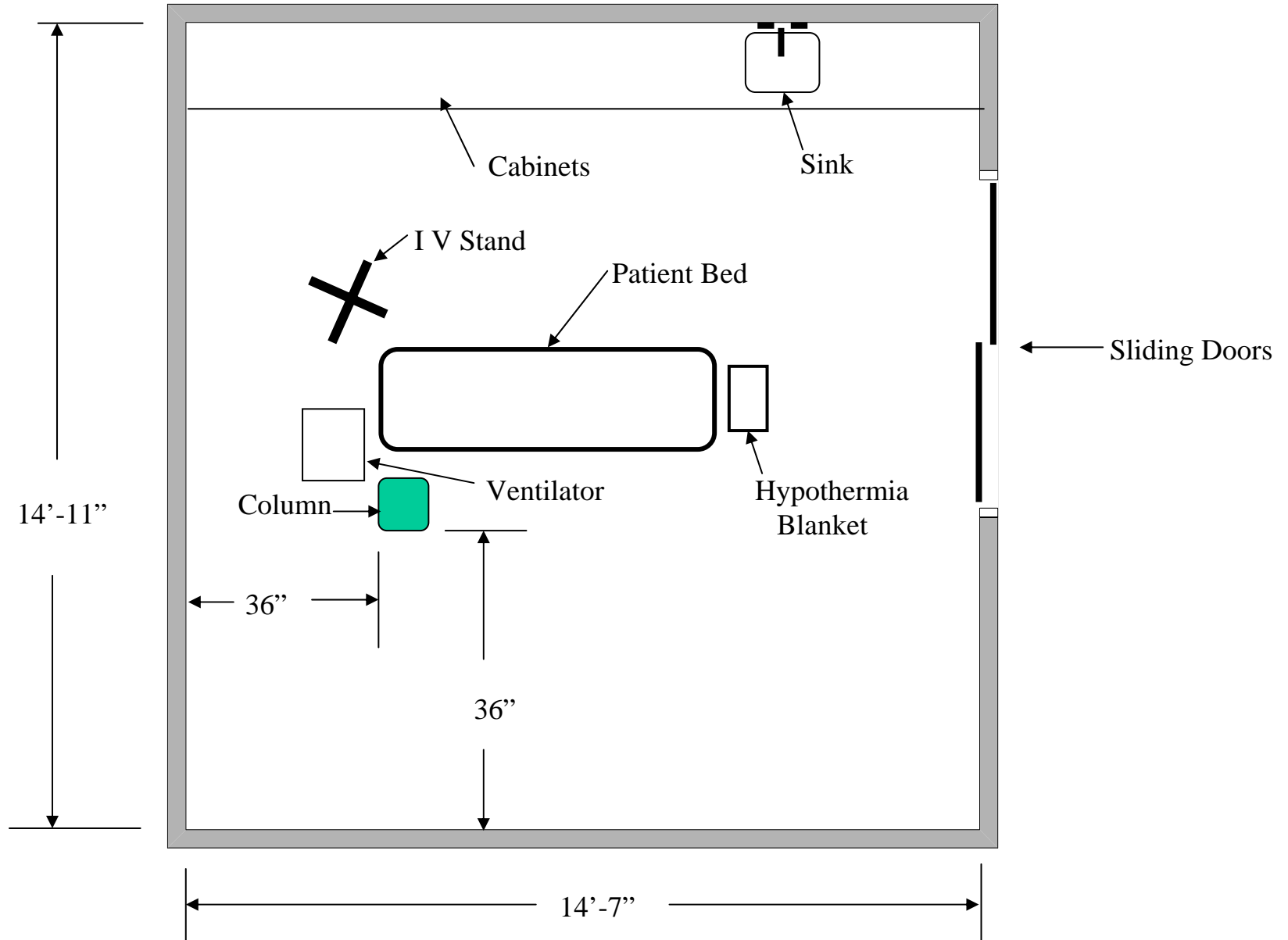
FIELD INTERCONNECTION BETWEEN MOBILES
WHEN RAIL SPANS OVER 18 FT. OR AS
NOTED ON SHOP DRAWINGS.





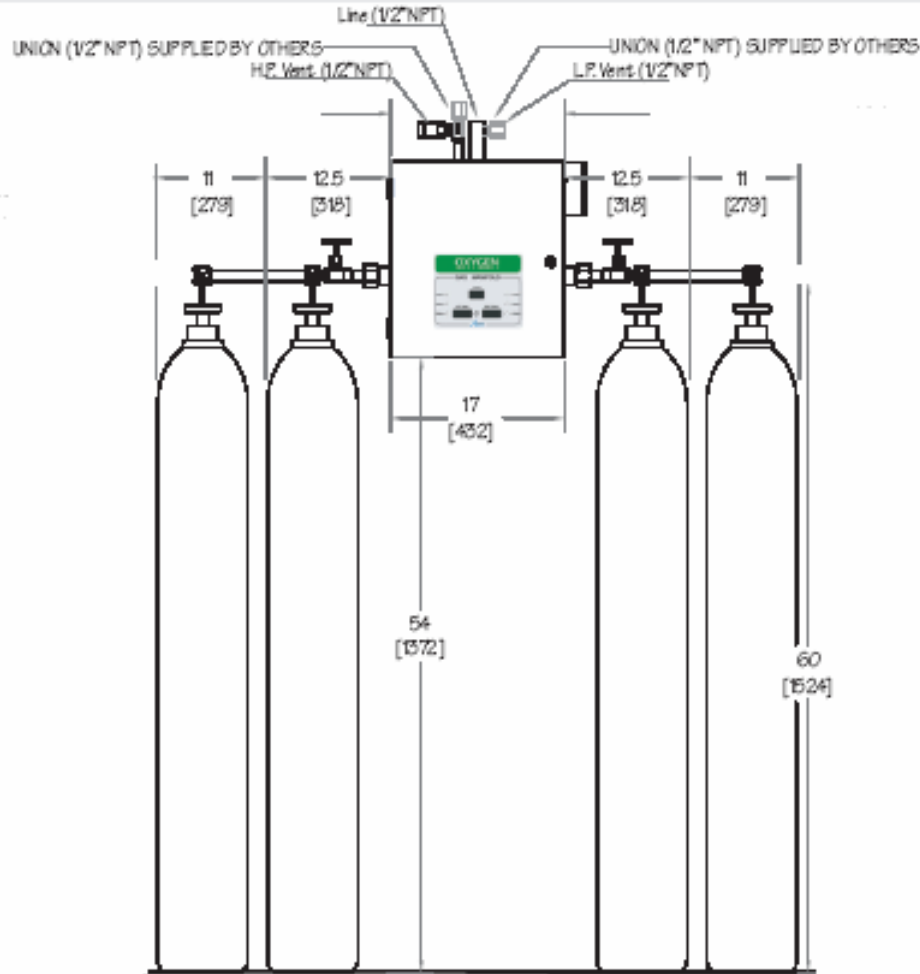
Overbed light Section

Column Location In Critical Care Room

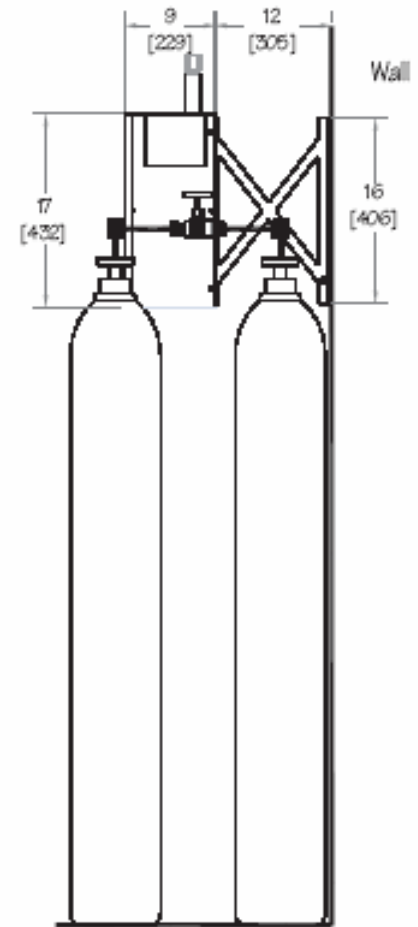


Manifold Located on First Floor

DIMENSIONS

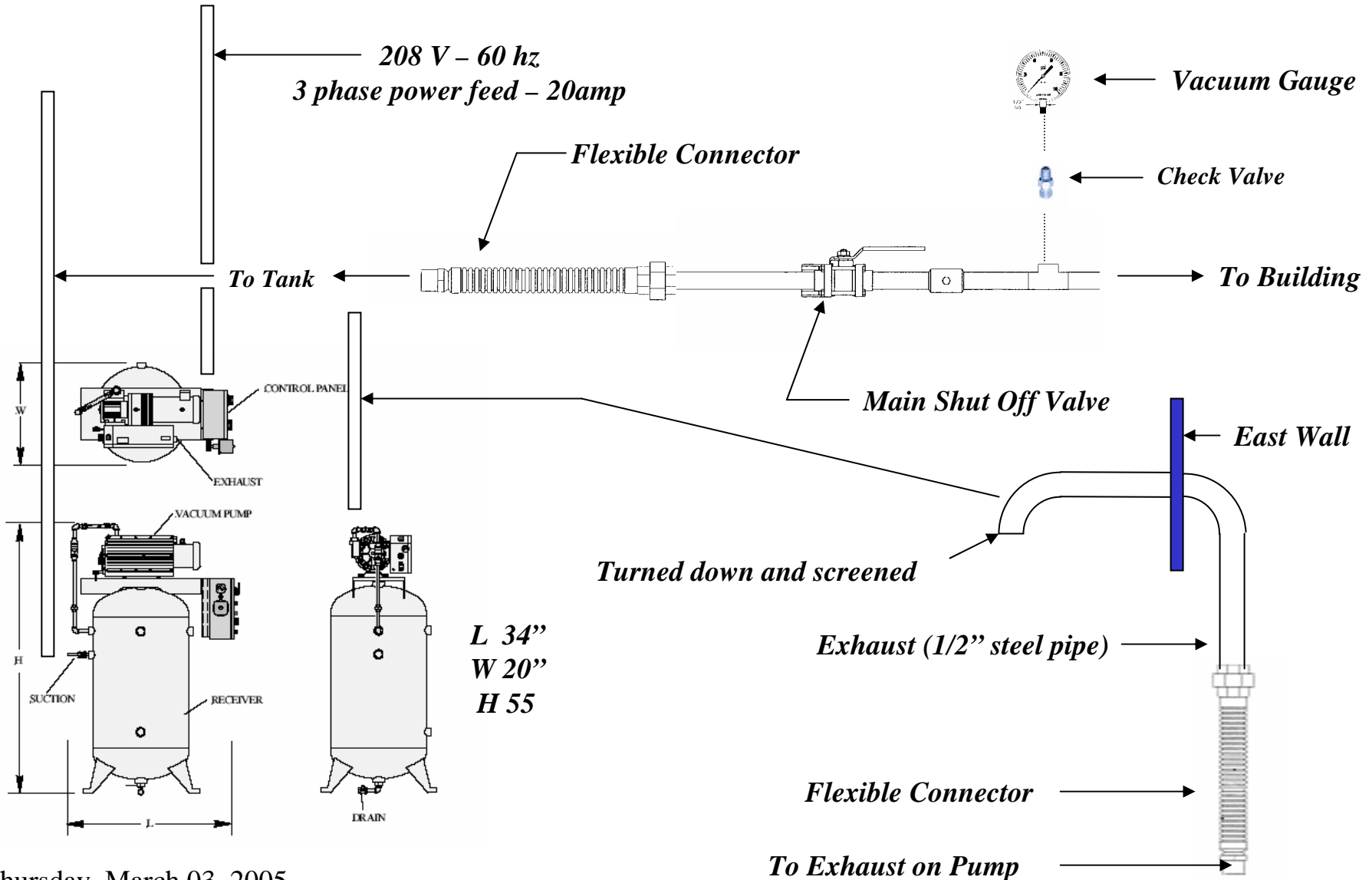


Front View



Side View

Vacuum Plant Located on First Floor



Rail Installation

